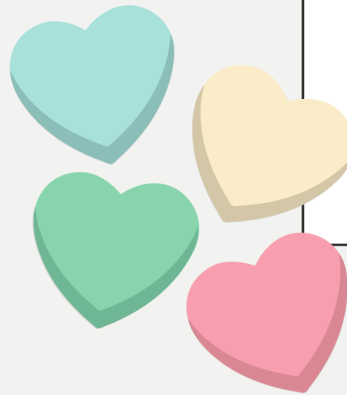


# Ridgemoor Park Montessori



CHECK IT OUT!

## PRINCIPAL NOTES Julie Reyers

Hello,  
February has arrived and although we have six more weeks of winter, I am certain they will be filled with positive work and learning at RPM.

We had a strong showing for the Winter MAP testing sessions with 100% of students completing the Reading MAP and 97% of students completing the Math MAP. This was quite an achievement due to the snow days as well as having many students out with a variety of illnesses. Students were focused and took the tests in stride. We are excited to examine the data at upcoming Professional Learning opportunities. This data will be one way to measure student growth along with classroom assessments and teacher observations.

Peace - Julie

“Even though I have studied this question for a long time, I am continually surprised. I understand more and more how advanced and able small children can be. ”

-Maria Montessori, 1946 London Lectures



## IMPORTANT DATES

2/3 - PTA Meeting

2/6 - School Tour for prospective families 10:00

2/12 - SPRING COUNT DAY & Graphic Novel Club - 4:10-5:15

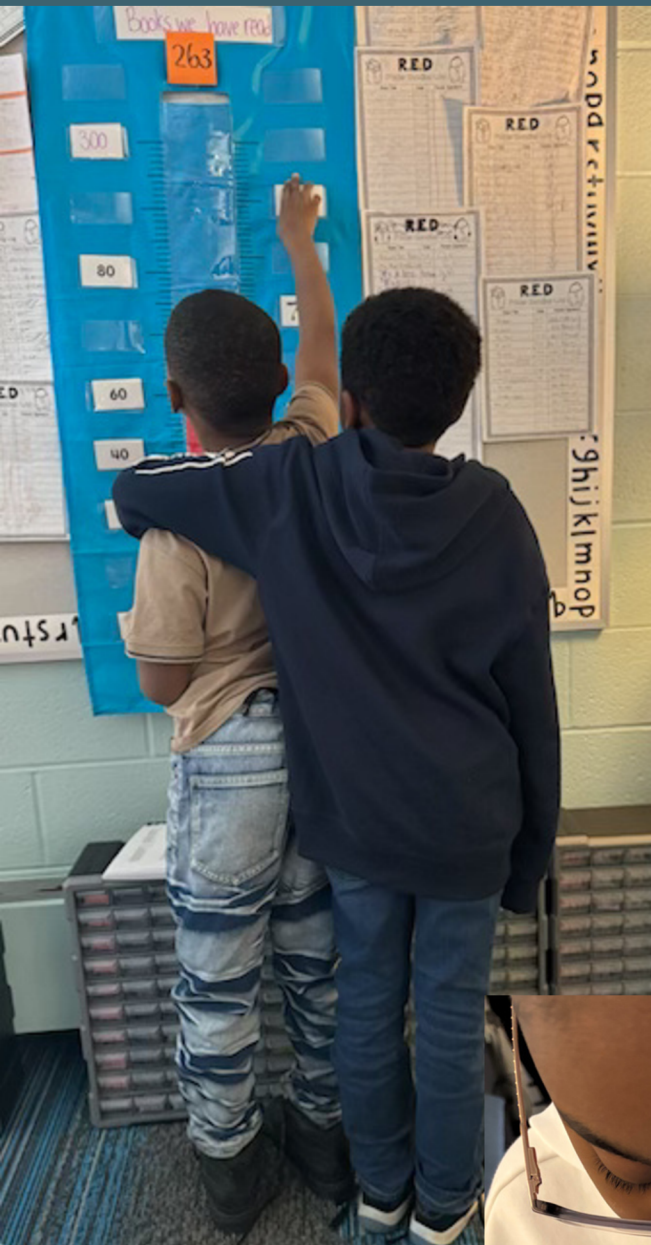
2/18 - RESCHEDULED Java with Julie 6:15

2/19 - Pie Sale Kickoff

2/20 - PTA Game Night 5:30-7:30

2/24-2/25 - NO SCHOOL - MIDWINTER BREAK

# Photos



# Keeping Up-to-Date

## 2024-25 RPM STAFF

Children's House - Sharon Honicutt

EC Paras - Paige Dillon & Sarah Padlo

E1 Team - Brenda Good, Jacqueline Bingaman & Emily Teeple

E2 Team - Thea VanGoor, Rita Paniccia & Lorin Sorenson

Instructional Para - Margaret Petersen

Literacy Para - Layla Kren

Music - Thomas Frye

Art - Chris Fiore

PE - Lance Gransow

Nurse - Melissa Anglin

Health Aide - Quaonna Draper

Nutrition -

Nutrition Aide - Dian Alexander

Recess Aide - Kyla Reyers

Custodian - Marcellus Putnam

Speech - Jessica Hoogstrate

OT - Holly Cielinski

Resource - Theresa Dawson

Social Work - Noemi Weekley

PN Facilitator - Dr. Terina Harvey

PN SRS - Susan Lee

PN Strengths Based Interventionist - Pete Barrows

PN Chief Community Builder - Sydney Balsitis

Head Secretary - Katie Mollhagen

Principal - Julie Reyers

# Montessori Volunteers Do That!

## Events

- Ice Cream Social
- Movie Nights
- Field Trips
- Curriculum Night
- Game Nights
- Reading Month
- Trunk or Treat
- Field Day
- End of the Year Parties

**Volunteers make the magic happen at events for our scholars!**

## Fundraisers

**School volunteers and RPM PTA members raise money for our school through Pie Sale, PTA Popcorn Days, and corporate donations.**

These funds are used to host events and school-wide activities, grant teacher requests, maintain the pollinator garden, and assist with field trip funding.

## Clothing Closet & Winter Gear

### Winter Gear

This year's Winter Gear Swap and Share boasted over 70 coats and pairs of snow pants, and dozens of pairs of boots, gloves, and other accessories!

### Clothing Closet

Volunteers organize and maintain clothing donations of all sizes to be used as back-ups on messy days or made into care packages to be sent home with scholars in case of need.

## Teacher and Staff Support

- Teacher Appreciation Week
- Stock the Staff Lounge
- Chaperone Field Trips
- Practical Life Works
- Conference Meals
- Material Prep
- Reading Buddies
- Classroom Helpers
- Lead Clubs and Sports

## Ready to Join In?

*What*

*When?*

*How?*

Register with GRPS for volunteer clearance.	Today!	<a href="https://grps.org/volunteer">Grps.org/volunteer</a>
Fill out the RPM Volunteer Interests and Availability Survey	ASAP!	<a href="https://bit.ly/VolunteerAtRPM">Bit.ly/VolunteerAtRPM</a>
Pick up your volunteer badge and JOIN THE FUN!	Whenever you can!	Do <b>WHATEVER</b> you do best, <b>WHENEVER</b> works best for you!