



GRPS Elementary School

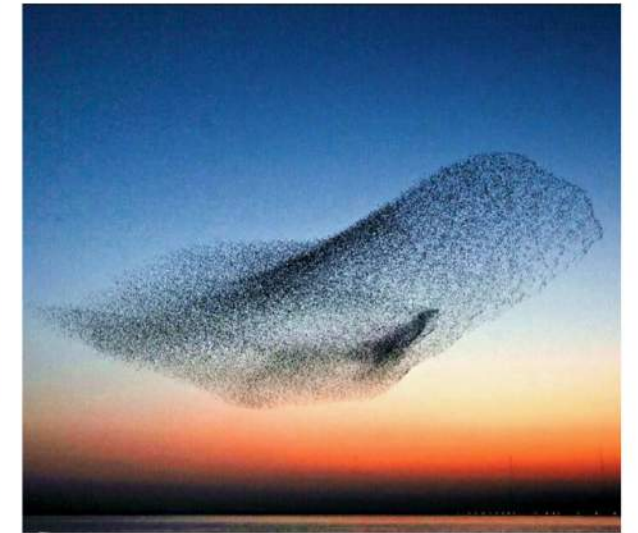
Community Presentation

04/15/2025

TAKE FLIGHT AND S.O.A.R.



"For many, watching a bird in flight evokes a sense of liberation, encouraging us to rise above our struggles and look at life from a broader, more elevated perspective. The idea of "spreading one's wings" is often a metaphor for personal growth, transformation, and self-discovery. "



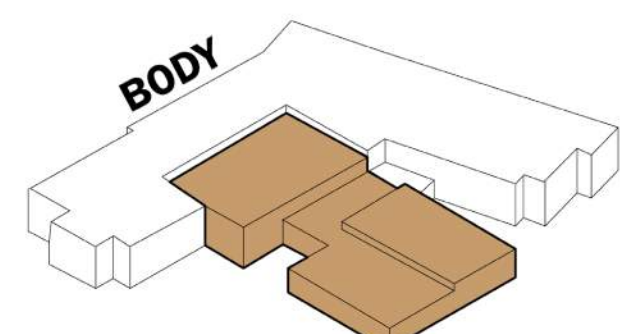
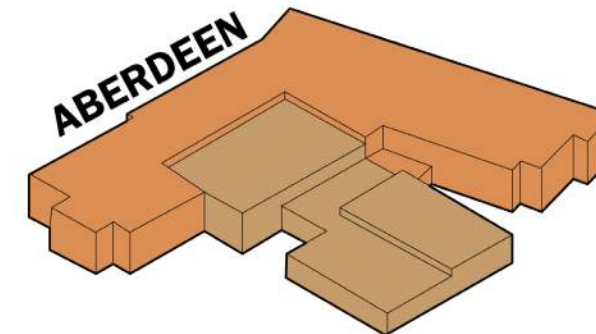
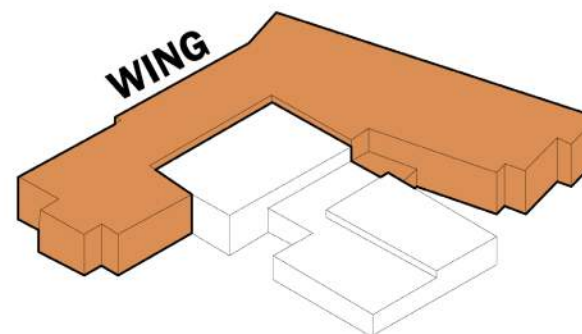
KEY WORDS & IDEAS

- Murmuration
- Emerge
- Sustained Success
- Dive down for greater knowledge and rise up better/smarter
- Bridge as flight to learning
- Migrate to learning

THE NEW GRPS ELEMENTARY STRIVES TO PROVIDE A SPACE FOR STUDENTS TO DIVE INTO LEARN, ABSORB AND BE A COMMUNITY BEFORE THEY TAKE OFF INTO THE WORLD

S.O.A.R. acronym to capture the qualities we encourage in our scholars: **Safety, Ownership, Achievement, Respect.** At Aberdeen, you can be sure that your child will receive an education that soars above the rest

BIRD FLIGHT PATHS



TAKING FLIGHT

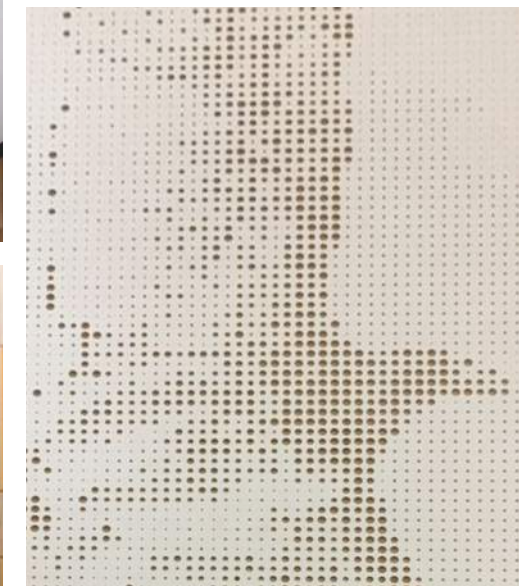
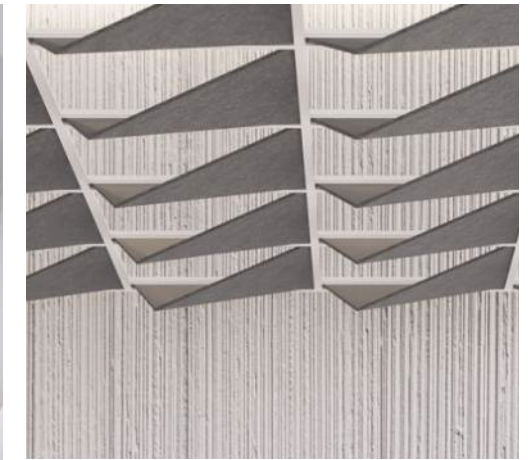
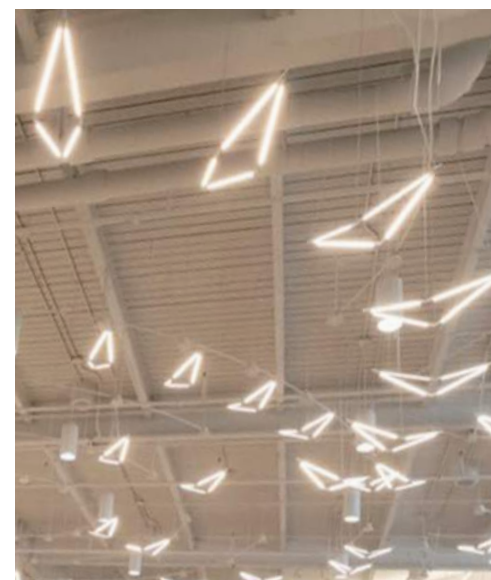
Reaching New Heights

Organic forms and colors shape the interior design of GRPS Elementary inspiring students to rise, explore, and reach new heights. The goal is to create an environment where students are empowered to chart their own paths, overcome challenges, and grow both academically and personally.

The school's mascot is reflected throughout the interior with subtle nods to the theme of "taking flight". Much like a murmuration of birds, where each bird contributes to a larger, harmonious movement, students at Aberdeen Elementary will thrive in an environment of collaboration and shared growth.

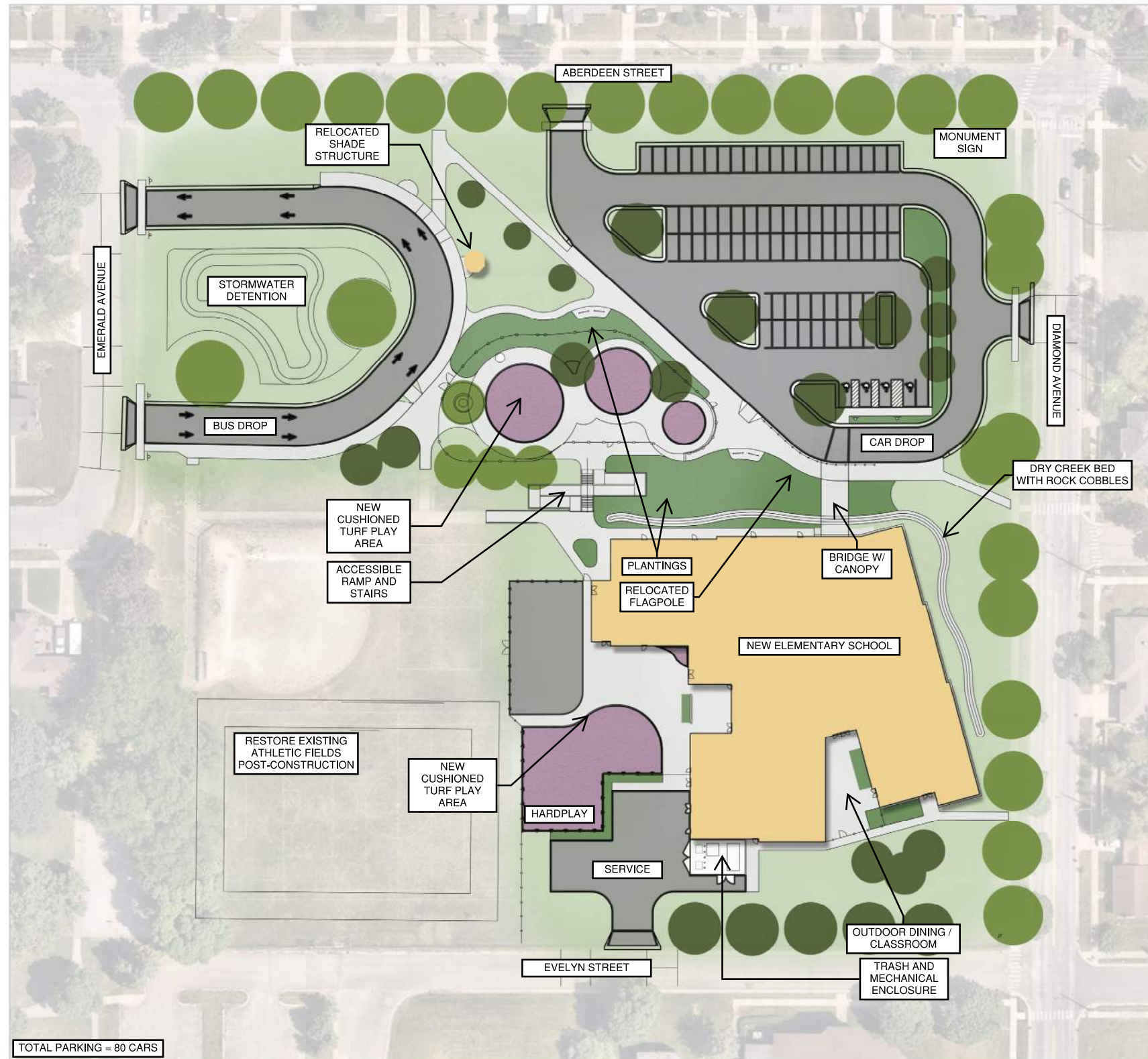
The design features warm, light woods that foster a sense of stability and connection to the natural world, balanced by vibrant colors that inspire creativity and energy. These elements create an inviting atmosphere that promotes focus, enthusiasm, and inspiration. Overhead, lighting and acoustic solutions make learning environments comfortable and engaging, while reducing distractions. Collaborative spaces are designed to encourage open communication, teamwork, and flexible learning, allowing students to work together and grow in a supportive community.

The uplifting and engaging interior of Aberdeen Academy marks it as a place where students are given the tools, guidance, and community support they need to spread their wings and soar to their fullest potential—in the classroom and beyond.





GRPS Elementary School | **Site Plan (Neighborhood Context)**



SITE PLAN



BLUE PACIFIC JUNIPER
LOW MAINTENANCE GROUND COVER EVERGREEN SHRUB
PLANTED AT HILLSIDE TO PREVENT THE NEED FOR WEEKLY MOWING



SPRING SNOW CRABAPPLE AND EASTERN REDBUD
LOW MAINTENANCE SMALL CANOPY SHADE TREES
INTENDED TO PROVIDE NATURAL SHADE AT GATHERING AND DROP OFF AREAS



FIRE WITCH DIANTHUS AND EVERGREEN CANDYTUFT
LOW MAINTENANCE NATIVE PERENNIALS
INTENDED AS ACCENTS TO THE MORE INTIMATE OUTDOOR SPACES



DRY CREEK BED WITH SMALL COBBLESTONES
INTENDED TO PROVIDE NECESSARY DRAINAGE AT THE BOTTOM OF THE HILL, WHILE MAINTAINING A FUN AND AESTHETIC APPEARANCE. ROCK COBBLES WILL BE SET INTO CONCRETE TO PREVENT REMOVAL.



- CLASSROOMS
- ADMINISTRATION
- SPECIAL EDUCATION
- SPECIALS
- MEDIA CENTER / FLEX
- CAFETERIA / BREAK-OUT
- CIRCULATION
- SUPPORT



- CLASSROOMS
- ADMINISTRATION
- SPECIAL EDUCATION
- SPECIALS
- MEDIA CENTER / FLEX
- CAFETERIA / BREAK-OUT
- CIRCULATION
- SUPPORT

GRPS Elementary School | Lower Level Floor Plan



GRPS Elementary School | Exterior Perspectives (Main Entrance)



GRPS Elementary School | **Exterior Perspectives (North Classroom Wing)**



GRPS Elementary School | Exterior Perspectives (Young Scholar Playground & Gymnasium)



GRPS Elementary School | **Exterior Perspectives (Cafeteria & Outdoor Learning)**



GRPS Elementary School | **Exterior Perspectives (East Classroom Wing)**



GRPS Elementary School | **Exterior Perspectives (From Diamond Ave.)**



GRPS Elementary School | **Additional Exterior Palettes (Cool Palette)**



GRPS Elementary School | **Additional Exterior Palettes (Cool Palette)**



GRPS Elementary School | **Additional Exterior Palettes (Warm Palette)**



GRPS Elementary School | **Additional Exterior Palettes (Warm Palette)**



Option 1: Red Hawk Palette



Option 2: Warm Palette



Option 3: Cool Palette

GRPS Elementary School | **Shroud Palette Vote**



GRPS Elementary School | **Media Center (View Looking North)**



GRPS Elementary School | Media Center (View Looking South)



GRPS Elementary School | **Dedication Wall**



Q&A

