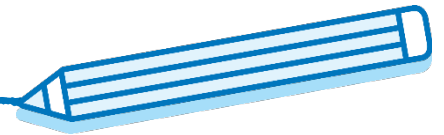




Grand Rapids Public Schools Facility Master Plan

November 14, 2022

Presented to Grand Rapids Public Schools



GRPS Facilities Master Plan Presentation

Agenda

□ Background

- 2012 Transformation Plan
- 2022 Strategic Plan

□ Facilities Master Plan Process

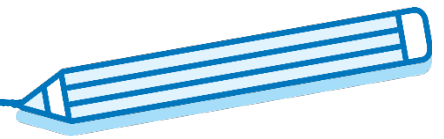
- Findings
- Communication and Engagement

□ Recommendations

- Impact
- Invest
- Innovate
- Sustain

□ Next Steps

□ Questions and Answers



Background

2012 Transformation Plan

Planned Actions & Outcomes

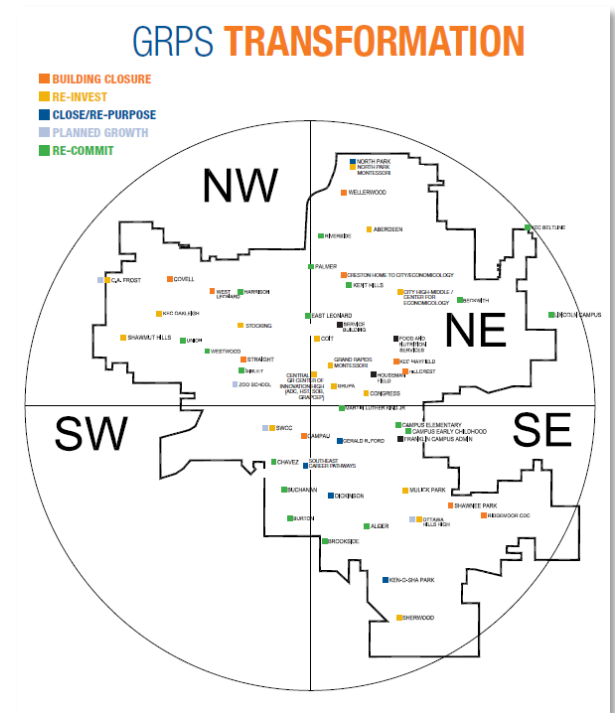
- Significant buildings were recommended for closure
- Buildings were realigned with educational programs

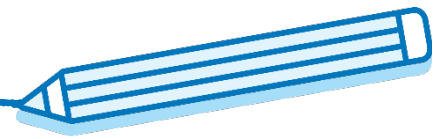
Phases

- Phase 1: 2012-2013 → Close and re-invest in buildings
- Phase 2: 2014-2015 → Propose final recommendation options on IB, Secondary Redesign, and Charter Options
- Phase 3: 2015-2016 → Implement planned growth recommendations with approved bond finances.

Finance

- GRPS district passed a 2.1 mill increase in 2015, netting \$175M in capital funding
- Primary focus of investment was high schools, with ~\$110M allocated.





Background

2022 Strategic Plan

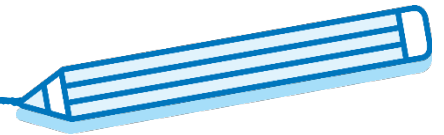
□ Strategic Themes

- Meet holistic scholar needs
- Optimize and value all school options
- Ensure equitable access and outcomes
- Enhance curriculum and program opportunities
- Cultivate an engaged, impactful, more diverse workforce
- Create a culture of trust, collaboration, and stewardship



□ Facility Theme

- Average Facility Utilization – 75%



Facilities Master Plan Process

Communication and Engagement

□ Process

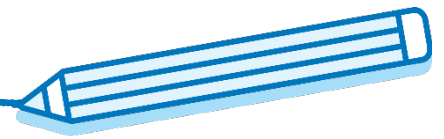
- In the Summer 2022, the Facilities Master Plan (FMP) Work Group and the Board of Education defined the goals, strategies, stakeholders, and methods for district engagement.

□ Goals

- Inform stakeholders about the Strategic Plan and FMP process and timeline.
- Consult stakeholders on the proposed options for the FMP.
- Involve stakeholders in shaping continual engagement, to occur after the FMP has been approved.

□ Methods

- Community Survey
- Lunch and Learns
- Robocalls
- Backpack Stuffers
- Scholar Survey
- Town Halls
- Mailers
- Radio Ads



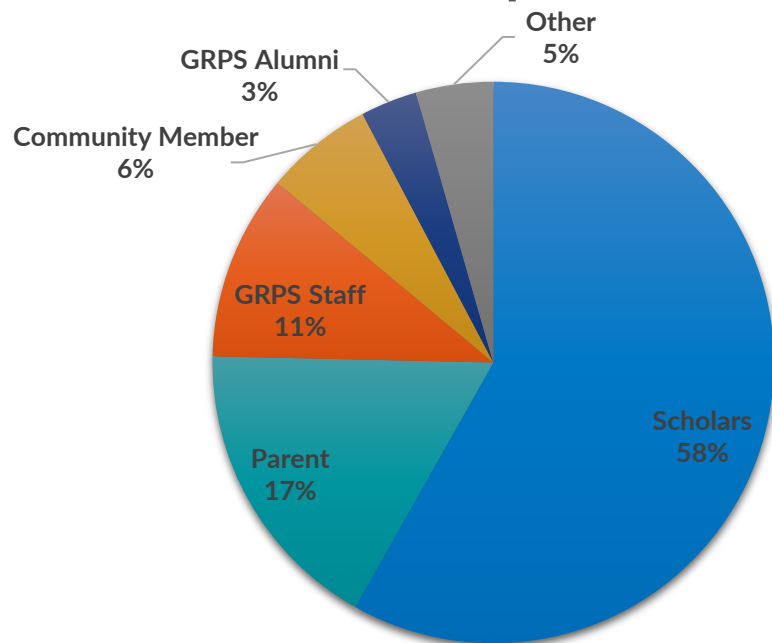
Facilities Master Plan Process

Communication and Engagement

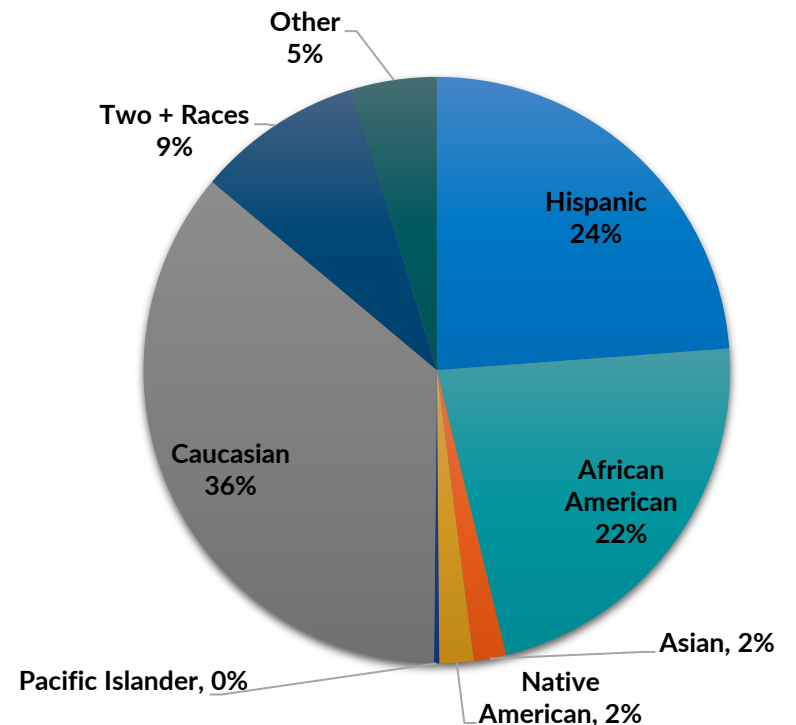
□ Results

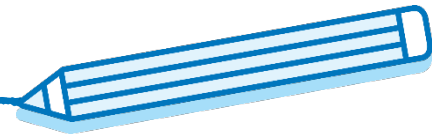
- As of November 4, 2022:
 - 3,900+ scholar survey responses
 - 2,100+ community survey responses
 - 12 town halls
 - 7 lunch and learn meetings

Relationship to GRPS



Race & Ethnicity of all Respondents





Facilities Master Plan Process

Communication and Engagement

□ Results

- The FMP Work Group (GRPS Administration, BoE Ad Hoc, PMC, Urban Curry) analyzed the data and feedback in effort to craft options for future FMP decisions.
- Board of Education have analyzed the results and feedback in effort to consider recommendations for future FMP decisions.

**OUR CHILDREN,
OUR SCHOOLS,
OUR FUTURE**

INTRODUCTION

Grand Rapids Public Schools is researching various aspects of its educational, operational, financial, and facility (building) functions. As part of this process, the district's strategic planning consultant, Plante Moran Cresa, is seeking feedback in the form of a survey.

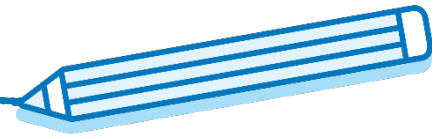
Your insight will help the district refine its facilities master plan to align with both short-term and long-term goals and objectives. Please complete the survey by Monday, October 24, 2022. Survey results will be shared publicly upon completion in December 2022.

Thank you in advance for participating in the survey. Please direct any questions to the GRPS communications team via email at myschools@grps.org or call (616) 819-2149.

GRPS
my choice®
Grand Rapids Public Schools

**plante moran
cresa**
Real Estate Consultants

FACILITY MASTER PLANNING COMMUNITY INPUT SURVEY

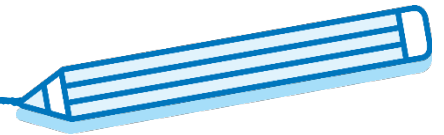


Facilities Master Plan Process

Communication and Engagement

□ Community Results and Feedback

- Be forthright, transparent, and clear about decisions.
- Renovate and improve existing school buildings before constructing new.
- Renovate existing performing arts auditoriums.
- Invest in athletic programs, fields, tracks, and pools.
- Investments need to be made equitably across the district
- Vacant land should be kept for community parks or public housing.
- GRPS needs more Young-5's and Pre-Kindergarten options.
- Repurpose unused buildings;
 - Priority 1 - community centers
 - Priority 2 – affordable housing
- Invest in teachers and staff.
- Provide better transportation methods.
- Increase Montessori size & programs.

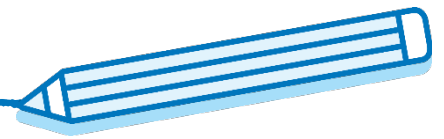


Facilities Master Plan Process

Communication and Engagement

☐ Scholar Results and Feedback

- Scholars like/love their teachers and friends most about school
- Scholars prefer small class and school sizes.
- Scholars are generally split on K-5 or K-8 grade configurations due predominately to:
 - Middle schoolers can be mean to younger kids
 - Middle schoolers can be role models
 - You only need to go to one building if you have multiple family members
- Increase access and improve condition of athletic facilities/fields/gyms
- Improve playgrounds and outdoor rec spaces
- Provide more access to electives
 - Sewing/cooking
 - PE/gym/swimming
 - Photography
 - Art/drawing
- Of all the things scholars would change about their schools, it is:
 - Food
 - Phone Policies
 - Bathroom Conditions
 - Facility Conditions
 - Playgrounds
- Improve HVAC in all buildings.

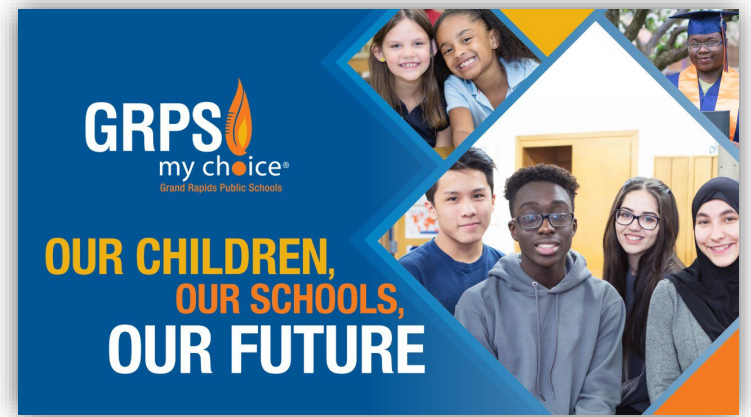


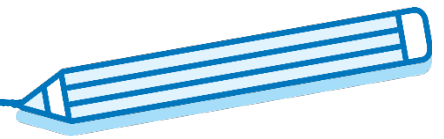
Facilities Master Plan Process

Communication and Engagement

□ Decision Making Criteria for Realigning Facilities

1. Results in equitable scholar outcomes
2. Creates new and improved scholar opportunities
3. Invests in spaces, environment, and culture to strengthen teaching and learning
4. Aligned with Strategic Plan
5. Positive financial impact, increased operating efficiencies
6. Future growth through innovative, adaptive use
7. Supports scholar, families, and staff voice
8. Emphasize safe, healthy, and accessible facilities
9. Use land for community benefit
10. Prioritizes ownership of buildings and land



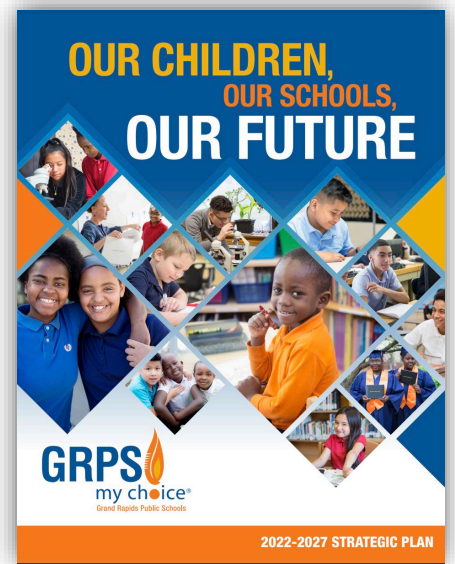


Facilities Master Plan Process

Communication and Engagement

□ Tools Used to Inform Decision Making for Realigning Facilities

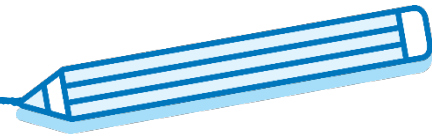
- 2022 Strategic Plan
- GRPS Academic Plan
- Continual Stakeholder Engagement Efforts and Feedback
- Program Consolidation and Compatibility Assessments
- Academic Model / Grade Configuration
- Facilities Conditions Assessments
- Utilization Studies
- Enrollment Projections



PRIORITY STUDENT OUTCOMES

These priority student outcomes will be defined by measurable progress indicators, and our performance on these outcomes will be reported to our community annually.

Increase literacy proficiency	Reduce academic disparities for Black and Latino students	Increase student empowerment, belonging, and agency
Increase math proficiency	Reduce Black students exclusionary discipline	Increase successful transitions from high school to college or career



Facilities Master Plan Recommendations

Recommendations

□ Phase 1: Impact

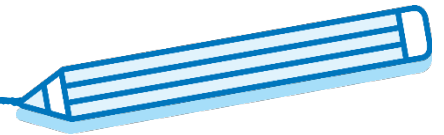
- Consolidate GRPS facilities by relocating educational and support programs to provide environments that allow scholars and staff to excel in alignment with the Strategic and Academic Plans.

Recommendation #1

Ensure sustainability and align with Strategic Plan by aiming for average 75% utilization across the elementary and middle school grade levels by 2032.

Recommendation #2

Enrollments and utilization rates to be assessed annually to ensure Facilities Master Plan, Strategic Plan, and Academic Plan implementations are improving measurable strategic outcomes.



Facilities Master Plan Recommendations

Recommendations

□ Phase 1: Impact

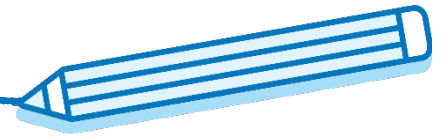
- Consolidate GRPS facilities by relocating educational and support programs to provide environments that allow scholars and staff to excel in alignment with the Strategic and Academic Plans.

Recommendation #3

Relocation of scholars and staff will be implemented to preserve programs, prioritize access, and improve learning environments into existing neighborhood and theme schools.

Recommendation #4

Be responsive and transparent with our community by producing a Facilities Master Plan calendar that includes continual stakeholder engagement and communication milestones on a regular basis.



Facilities Master Plan Recommendations

Recommendations

□ Phase 2: Invest

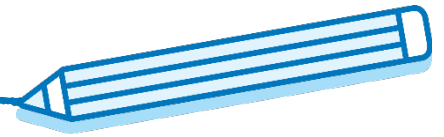
- Reimagine state-of-the-art-school environments that provide for greater scholar opportunity and equitable outcomes.
- Align capital requirements with this vision to make a positive financial impact on the district.

Recommendation #5

Provide continuation of funding for the implementation of the Facilities Master Plan through a capital program initiated in November 2023.



Image Source: [Clear Lake Iowa Chamber](#)



Facilities Master Plan Recommendations

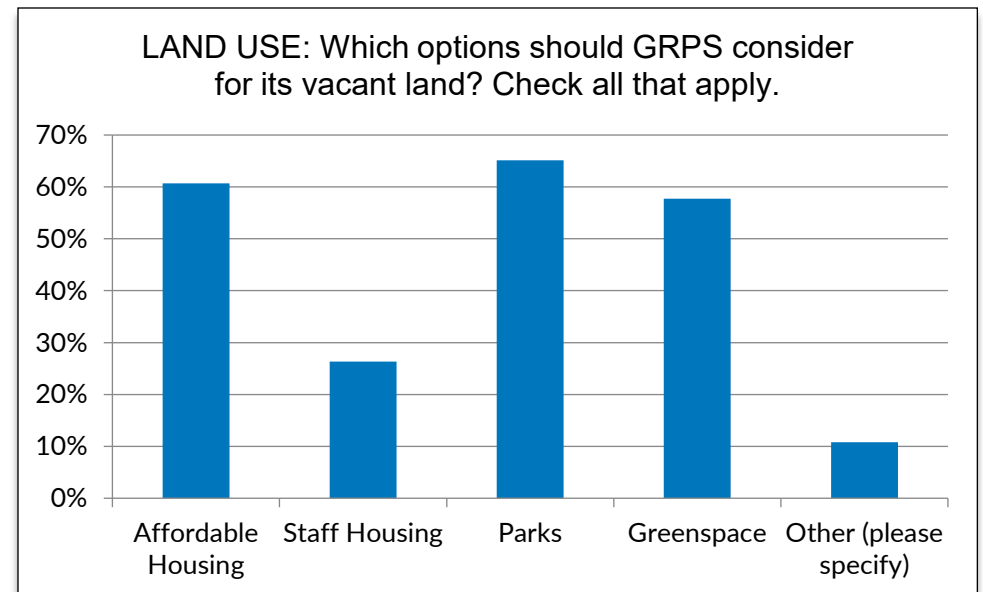
Recommendations

Phase 3: Innovate

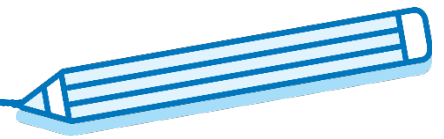
- Collaborate on opportunities within the district that would allow GRPS to create the community that would allow it to thrive and grow. Property would be prioritized for community benefit.

Recommendation #6

Use district assets for community benefit by seeking out partnership opportunities for vacated schools and sites once program replacements are identified. **GRPS would continue to prioritize property ownership with future asset decisions.**



Source: GRPS FMP Community Survey



Facilities Master Plan Recommendations

Recommendations

□ Phase 4: Sustain

- Manage vacant assets to improve fiscal responsibility while maintaining ownership.

Recommendation #7

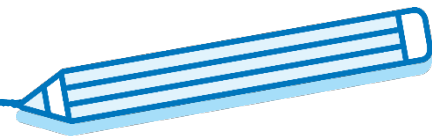
Reduce current operating costs and resource inefficiencies by leveling Kensington and divesting Alexander in fiscal year 2023. **GRPS would continue to prioritize property ownership with future asset decisions.**



Interior of Alexander from 2020 PMC FCA walkthroughs. Building is being used for storage.



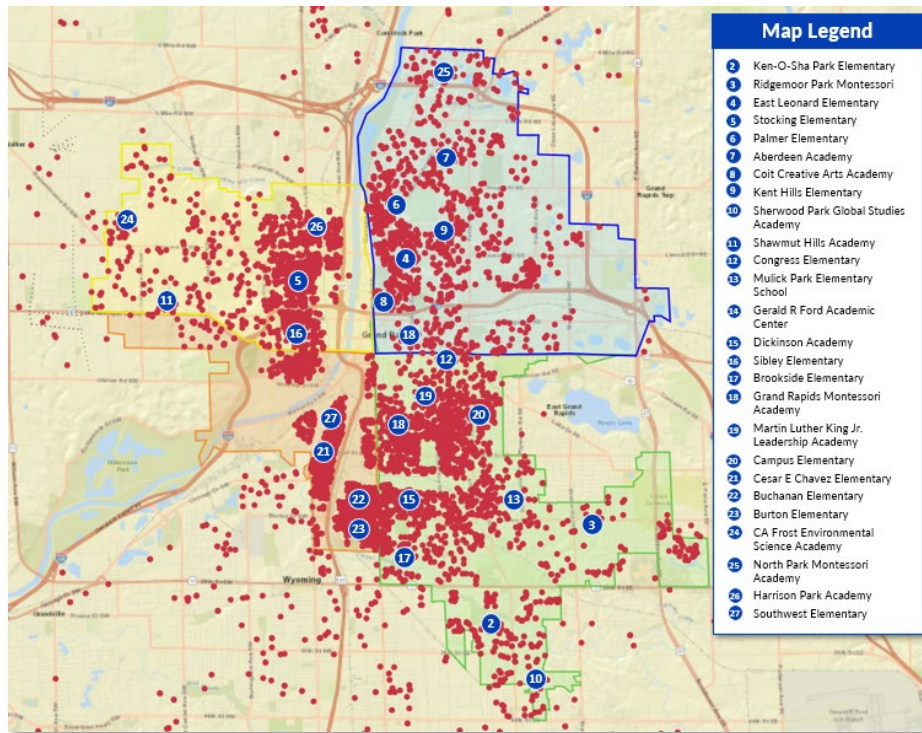
Interior Kensington from 2020 PMC FCA walkthroughs. Building is being vacated.



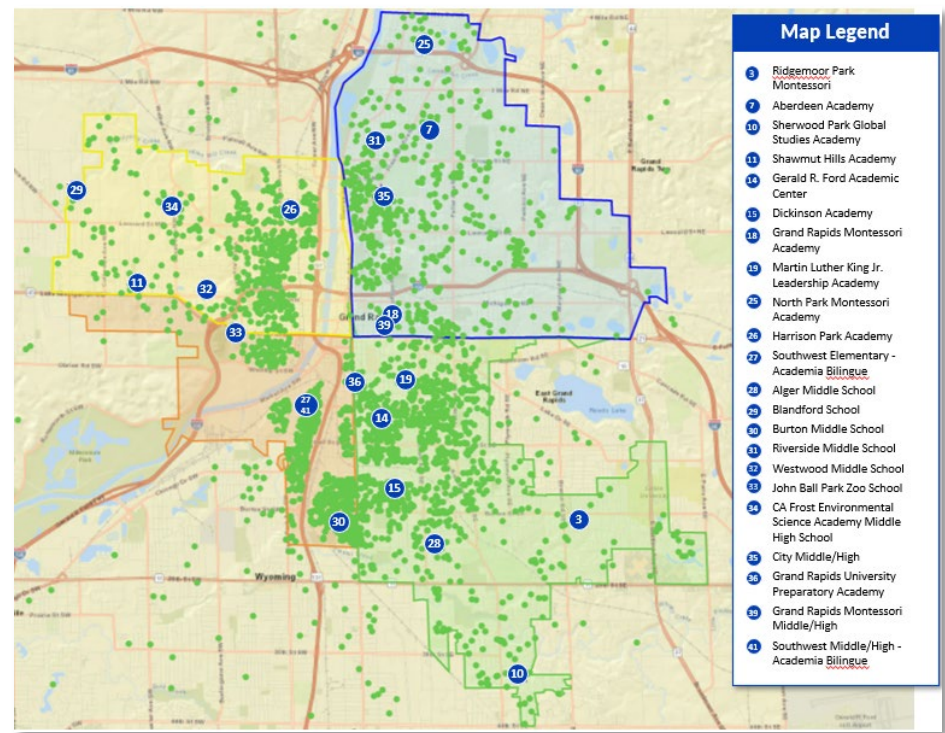
Facilities Master Plan Next Steps

Academic Overlay

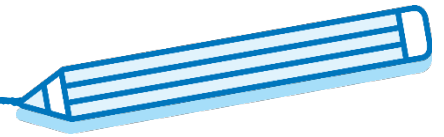
- Research and define preferred grade configurations for elementary and middle schools.
- Preferred models to be overlaid upon existing facilities and programs to determine extent of relocation and consolidation efforts within key recommendations.



GRPS K to 5 Scholar Enrollment Map



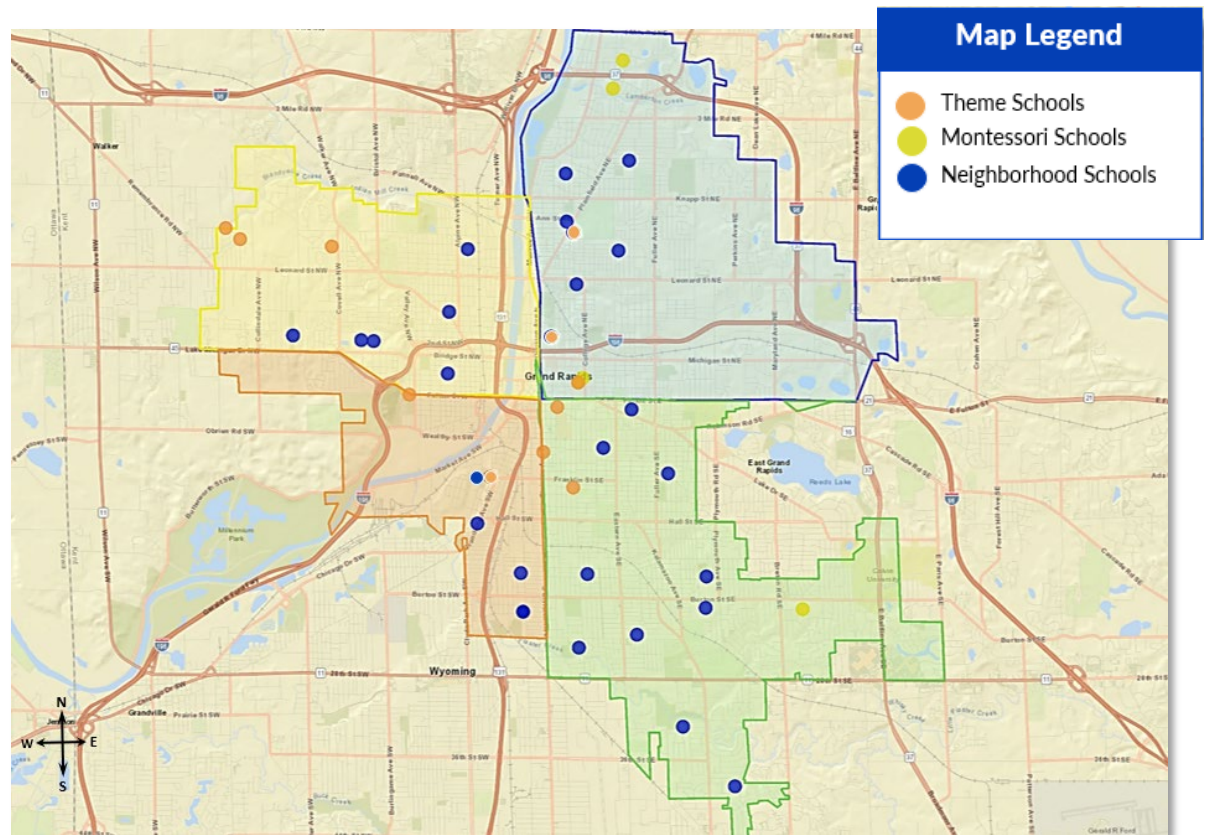
GRPS 6 to 8 Scholar Enrollment Map

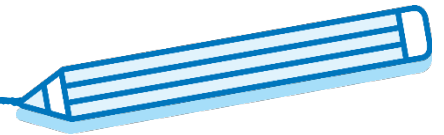


Facilities Master Plan Next Steps

Program Consolidation Assessment

- Identify existing themes and programs
- Define compatibility factors for determining fit and function of future school buildings.
- Determine compatibility of programs within existing neighborhood or theme schools with understood financial implications.
- Utilize Criteria Based Selection
 - Facility/Operational Lens
 - Academic Lens
- Present names of impacted facilities and programs with associated timeline to the district.





Facilities Master Plan Next Steps

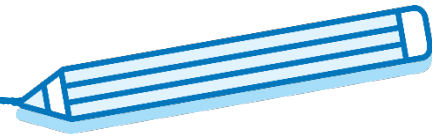
Capital Improvement Plan

□ November 2023 - Zero Millage Rate Increase Bond Proposal

- GRPS to present to the community a no-mill increase bond proposal for solidifying approx. \$258,000,000 in capital funding for implementation of the Facilities Master Plan.
- GRPS to conclude whether to present to the community a half-mill increase secondary bond for solidifying up to approximately \$60,000,000 in additional capital funding for the purpose of enhancing existing arts and athletics programs.

□ Capital Contingency Plan

- In the event the zero-millage rate increase bond proposal does not pass in November 2023, reevaluate and reassess in effort to present to the public for secondary vote in May 2024.
- If initial proposal in November 2023 is not supported by the GRPS community, define capital requirements and alternative funding sources for implementation of Facilities Master Plan and realignment efforts.



Facilities Master Plan Timeline

2022-2023

□ November 2022

- BOE draft review of FMP
- Public Input
- Round 1 stakeholder engagement complete

□ December 2022

- FMP recommendations approved

□ Winter – Spring 2023

- Round 2 stakeholder visioning sessions
- Stakeholders to provide input before schools are named

□ Spring/Summer 2023

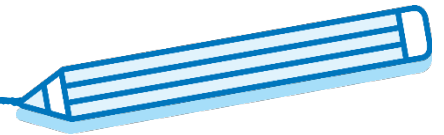
- Finalize Capital Plan

□ January – July 2023

- FMP implementation
- Educational/Financial/Operational approach definition
- Educational program realignment to instructional facilities
- Facilities to remain vs. repurpose

□ Spring / Summer 2023

- Publicly name schools to be realigned with timeline
- Round 3 stakeholder community conversations



Facilities Master Plan Timeline

2023

□ August 2023

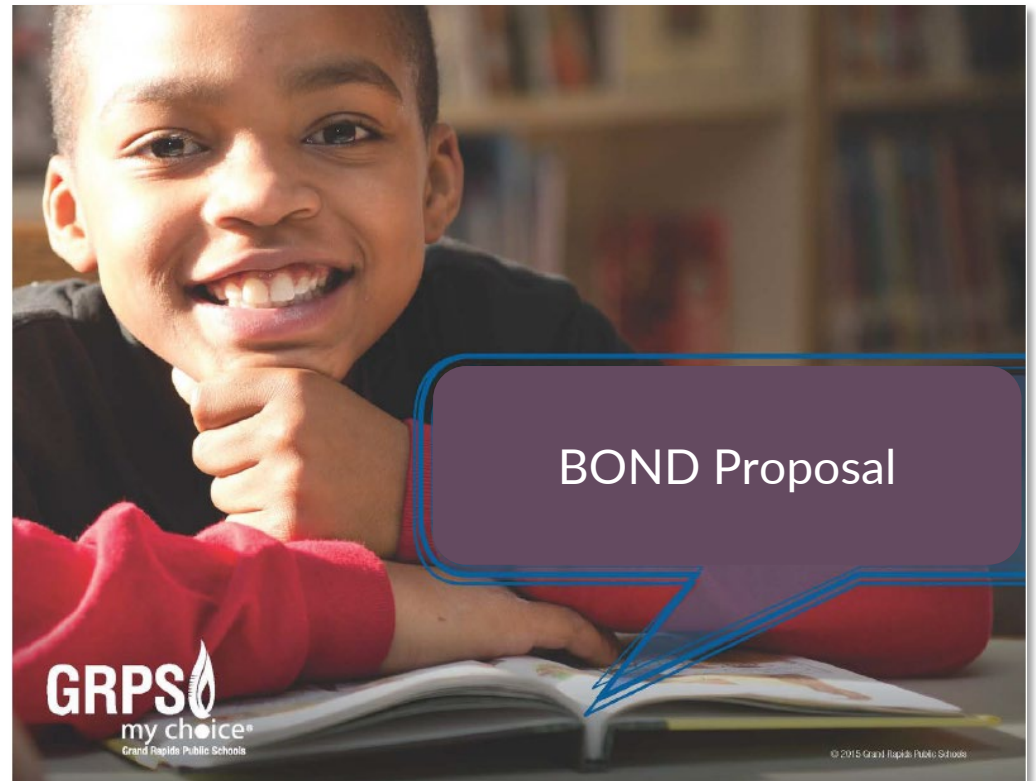
- Ballot proposal(s) preparation
- August 12th – Submission deadline

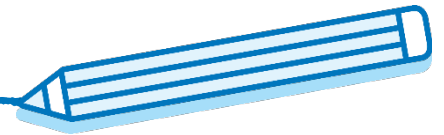
□ Fall – Winter 2023

- Round 4 stakeholder learning labs
- Discuss transition plans for realigned schools
- Explore possible re-uses for vacated facilities

□ November 2023

- Ballot proposal(s) vote





Facilities Master Plan Timeline

2024-2032

❑ Winter – Spring 2024

- Round 5 stakeholder engagement existing school design charettes

❑ December 2023 – June 2024

- Transition process defined for relocated programs

❑ Spring 2024

- Architectural design for renovations begins

❑ Summer 2024

- Round 6 stakeholder open houses & school tours

❑ Summer 2024

- Building consolidation begins for Fall 2024 school year

❑ Summer 2025

- Renovations begin

❑ 2025-2029

- Renovations continue
- New Construction (if applicable)

❑ 2023 – 2032

- Continuation of outreach for repurposed facilities



Questions & Answers

*For more information visit: www.grps.org
or email to myschools@GRPS.org*